



# BEACONSFIELD SCHOOL

*A Beacon Lighting the Path of Excellence and Wellbeing*

Newsletter No. 6 - Tuesday 16th May, 2023

Kia ora everyone,

What a busy time we have had since our last newsletter. The varied learning experiences certainly reflect the rich curriculum that Beaconsfield School offers.

There might be one or two parents and teachers who are relieved it is over, but Mr. Inkster recently organised a hugely successful duck calling competition. The quality of the calling was such that I was very surprised that a huge flock of mallards didn't materialise.

On the same day, we enjoyed creating an enormous pile of leaves and indulging in some leaf diving. This is an old tradition of mine, so it was great to be back at a school with plenty of Autumn leaves.

Last Friday, the whole school participated in a trip to the Valley of the Moa, Maungati Peace garden and the Frenchman's Gully Māori rock art site. Many thanks to Belinda Niven for her great organisation and parents for their help. It highlighted for me, the fantastic local curriculum opportunities available on our back doorstep.

The staff participated in a very full but worthwhile Teacher Only Day yesterday. The focus was on Structured Literacy, which is a major current development in New Zealand Primary education.

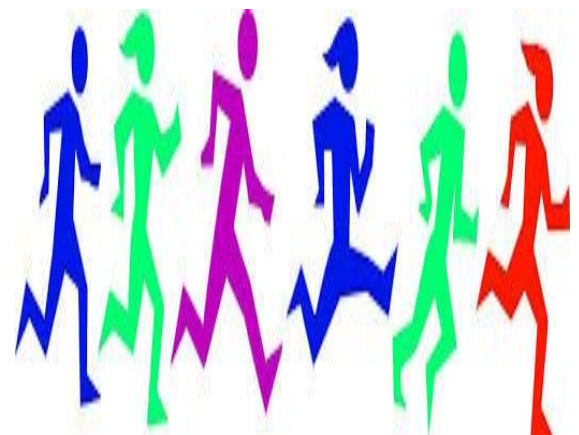
Dates for student reports and follow up three way interviews have now been confirmed, and can be seen in the calendar. I will provide more information about these in the next newsletter.

The long range forecast for our Cross Country next Tuesday 23rd May is very promising. Please ensure you have read the important information.

*John Fisher*

## Calendar:

18-22 May	Life Ed at School
19 May	Parent Session 1.45-2.15
19 May	Planting at Lindisfarne Rms 4 and 5
19 May	Pink Shirt Day -Gold Coin
23 May	X Country at Craigmore (X Country Postponement date 26 May)
25 May	EPRO8 Competition
30 May	NYLD Dunedin - Year 8
31 May	Hui Waiata (Song Festival)
5 June	King's Birthday
12 June	Wheels Week
22 June	Jump Jam
23 June	Farm Safety Day @ St Andrews - Whole School
23 June	Reports Home
28/29 June	Three Way Conferences
30 June	Last Day of Term 2



Time to do some more training for Cross Country!

Don't  
STOP  
Till you're  
PROUD



Our Values foci this week are Excellence and Initiative.

[officemanager@beaconsfield.school.nz](mailto:officemanager@beaconsfield.school.nz)

Office phone: 03-686-4819



# BEACONSFIELD SCHOOL

*A Beacon Lighting the Path of Excellence and Wellbeing*

Newsletter No. 6 - Tuesday 16 May 2023

Initiative

Creativity

Perseverance

Excellence

Respect



Congratulations to: Sophie, Charli, Seamus & Ben (back row) and Mason, Olivia, Hadley, Parker, Jazmine and Alexssa for demonstrating the values of Respect and Initiative.



Congratulations to: Kaylam, William, Doug, Asiaha & Heath (back row) and River, Renae and Charlotte for displaying the values of Creativity and Perseverance.



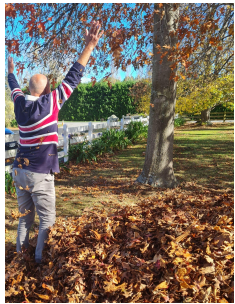
# BEACONSFIELD SCHOOL

*A Beacon Lighting the Path of Excellence and Wellbeing*

Newsletter No. 6 - Tuesday 16 May 2023



**FUN TIMES AT SCHOOL!**  
We saw some excellent acrobatics with our autumn leaf diving - even the teachers & Mr Fisher had a go!  
Also a big congratulations to the winners of our duck calling competition: William, Jimmy, Archie and Theo





# BEACONSFIELD SCHOOL

*A Beacon Lighting the Path of Excellence and Wellbeing*

Newsletter No. 6 - Tuesday 16 May 2023

## **IMPORTANT CROSS COUNTRY INFORMATION**

The **Rural Schools Cross Country** is scheduled for **Tuesday 23rd May at Craigmere Station** on Craigmere Hill Rd. The course is at the end of this road. Please follow the signs from the Craigmere Valley Road corner.

Buses will run as normal to school in the morning but will not be operating in the afternoon. As in previous years, parents will need to take their children to the event, or organise transport with another parent. The parent pick up from school will be at 10.45 am from the court area.

### **Some Further Notes**

- Postponement date is Friday 26th May. Postponement will be on HERO, Facebook and The Breeze by 9.00 am.
- This is a working farm so please remember to follow signage and instructions.
- Parking areas will be clearly signposted.
- Areas will be roped off for spectators.
- Children **will not** be provided with water. Please bring your own water bottle.
- The site is beautiful but exposed at times. Please ensure warm clothing for before and after races.
- **Sausage sizzle (\$3.00) and drinks (\$2) available. We are still looking for volunteers to assist with this please - if you can help out please email Lisa [officemanager@beaconsfield.school.nz](mailto:officemanager@beaconsfield.school.nz)**
- Two portaloos will be available for public use.
- A coffee cart will be operating.
- PLEASE NO DOGS.

FIRST RACE STARTS @ 12.15PM

RACE ORDER and APPROXIMATE START TIMES:

Year 0/1/2 Girls then Boys @12.15pm

Year 3/4 Girls then Boys @12.35pm

Year 5/6 Girls then Boys @ 1.05pm

Year 7/8 Girls then Boys @ 1.25pm

The long range forecast is very encouraging so we'll keep our fingers crossed.

Warm Regards

John Fisher



# BEACONSFIELD SCHOOL

*A Beacon Lighting the Path of Excellence and Wellbeing*

Newsletter No. 6 - Tuesday 16 May 2023

## MOA VALLEY TRIP - FRIDAY 12 MAY

A big thank you to our hosts and everyone who helped out, what a great day!!



*Speak UP*  
**STAND TOGETHER  
STOP BULLYING**  
KŌRERO MAI, KŌRERO ATU, MAURI TŪ, MAURI ORA

**FRIDAY 19 MAY 2023**

**PINK  
SHIRT  
DAY 23**



# BEACONSFIELD SCHOOL

*A Beacon Lighting the Path of Excellence and Wellbeing*

Newsletter No. 6 - Tuesday 16 May 2023

Welcome to Rudi, Harold and the Life Education caravan who are visiting Thursday 18 - Monday 22. This year's topic is Identity and Resilience. **Parents are welcome to come along to a parent session at the caravan at 1.45-2.15pm on Friday 19 May.**



**SPUD'S  
SUPREME**



Space is available on the school van. \$50 per 10 ride ticket.

To make a purchase and book a seat please contact the office on 686-4819.

## FOOD OPTIONS THIS TERM

### Pie Warmer - Tuesday & Thursdays

- Items clearly labelled with child's room number & name. No noodles or soups please.

### Spud Supreme - Wednesdays

- Pies, filled roll or wrap, spud, stuffed sausage or cheerios

<https://spudssupreme.nz/order/schools/>

### Subway - Fridays

- Six inch combo (apple & cookie) \$6
- Foot long combo \$10
- Drop orders to office by 9am



Our school production of Madagascar is on in Term 3.

Find the music here...

<https://www.youtube.com/playlist?list=PLSSxW66xnax00dFky6hz4wAcNSvfnwCvW>



**KEEP CALM  
AND PLEASE**

**CHECK THE  
LOST PROPERTY**



Who do I contact for more information?

Please contact your child's teacher, the principal, counsellor, or any teaching staff to check if this is the right support for your child.

Awahi Mai  
Awahi Atua

www.education.govt.nz/counselling-in-schools

To Kōwhiriwhiri  
Te Kōwhiriwhiri  
New Zealand Government

Awahi Mai  
Awahi Atua

Helping our tamariki to thrive

counselling support in schools

To Kōwhiriwhiri  
Te Kōwhiriwhiri  
New Zealand Government

School Counsellor available - please fill out referral form below if you would like to book an appointment for your Tamariki.



## School Based Counselling Service

### Skylight Referral Form

For Whānau, Teachers, SWIS workers, RTLB – please discuss with the Principal  
Please email the completed form to [clinicalcoordinator@skylight.org.nz](mailto:clinicalcoordinator@skylight.org.nz)

Date:	
Referrer name and relationship to the child:	
Child's name and gender:	Male: <input type="checkbox"/> Female: <input type="checkbox"/> Diverse: <input type="checkbox"/>
School/Kura:	
National Student Number (NSN) <small>This will be used for statistical purposes only. Your school receptionist can provide you with the NSN or the clinical coordinator will call you for your permission to ask the school on your behalf.</small>	
Teacher: Classroom:	Year: Teacher's email:
Child's date of birth:	
Ethnicity <i>if you wish to share this</i>	
Parents/Caregiver:	
Phone contact	
Email	
Are you happy for the counsellor to leave a voice message?	YES/NO
Are you happy for the counsellor to send you a message via txt?	YES/NO

*NB: Where parents are living separately, Skylight's policy states that it is in the child/children's best interest both / parents are aware of the counselling. Deciding or communicating this, is not Skylight's responsibility.*

Does the tamariki/rangatahi receive support from other services within the school/community?

e.g: Teacher Aide Support, Social Worker in Schools

If yes, please list:

.....

Reason for referral:

*What are your concerns for this child? How are these concerns affecting the child's daily life? What supports do you think would be helpful?*

Signed: ..... Date: .....



# BEACONSFIELD SCHOOL

*A Beacon Lighting the Path of Excellence and Wellbeing*

Newsletter No. 6 - Tuesday 16 May 2023

## | COMMUNITY NOTICES

NZ'S BIGGEST LIGHT SHOW

# ILLUMINATE

EXPERIENCE MORE THAN JUST LIGHTS



**25th-28th May**

**Timaru Botanic Gardens**

Tickets online @[illuminateshow.co.nz](https://www.illuminateshow.co.nz)

 Event Hire  **CRUSADERS** | PROUD PARTNERS





# BEACONSFIELD SCHOOL

*A Beacon Lighting the Path of Excellence and Wellbeing*

Newsletter No. 6 - Tuesday 16 May 2023

## COMMUNITY NOTICES

### ***Song Festival - Hui Waiata***

*Celebrating NZ Music Month in South Canterbury Primary Schools  
with individual school choirs and mass items.*

***Pleasant Point Primary School Hall***

***Wednesday May 31st***

*Schools rehearsal 10am*

*Evening Concert 6:30 pm*



*For more details email:  
jannette@mrsasmusicschool.co.nz*

Release the Music in you! ✨

## Music Lessons

Piano, Vocals, Guitar, Bass, Drums, Ukulele, and Theory! 😊

Group or individual lessons are taught by experienced musicians in our studios and at various schools

**CONTACT US**  
Jannette Aldridge  
027 686 4877  
jannette@mrsasmusicschool.co.nz

## HAYLEYS DANCE STUDIO

Dance classes available at your school during school time

Jazz/Hiphop  
Tap Dancing

Classes focus on fun, encouragement and gaining self confidence!  
No exams or pressure!!

To enrol or to find out more information please message Hayley on  
Facebook: @hayleysdancestudio  
or Phone: 0223586979



# BEACONSFIELD SCHOOL

*A Beacon Lighting the Path of Excellence and Wellbeing*

Newsletter No. 6 - Tuesday 16 May 2023

## COMMUNITY NOTICES

### RONCALLI COLLEGE OPEN DAY

SUNDAY 21 MAY 2023

Registrations in the College Hall  
Interactive guided tours from  
10.00am - final tour 12.30pm



### SQUASH OPEN NIGHT

Timaru Squash Club  
22 Brunswick Street  
Timaru

Friday 28th April

6pm - 9pm

- Squash
- Racket Ball
- Table Tennis
- Darts



Bring along your family, friends & work mates and **HAVE A GO!**

Equipment Supplied - Everyone's Welcome!

**LOOK AT THIS!**

April Special Promo  
\$69 for a 3 month membership\*

\*visit [www.sporty.co.nz/timarusquash](http://www.sporty.co.nz/timarusquash) for more info

Start your child playing an acoustic instrument

**Enrol them now for the Timaru School of Music**

Limited places available for violin, recorder, guitar or ukulele.

Fill out the initial application: <https://timaruschoolofmusic.com/>

Government funded tuition for primary-school-aged students.

\$40 administration fee applies. Instrument hire available.



### NEXT CHAPTER PARENTING

TIPS AND STRATEGIES FOR PARENTS ON THE GO  
OR THOSE WHO JUST PLAIN NEED HELP!

**PARENTS!**

Looking for some ideas  
In your parenting?

**PRESCHOOLERS**

**SCHOOL AGE**

**TEENAGERS**

**CHECK THIS OUT!**

[www.nextchapterparenting.co.nz](http://www.nextchapterparenting.co.nz)

(Courses also offered either  
individually or group)  
WINZ SUBSIDISED WHERE APPLICABLE  
Contact: [brigid@nextchapterparenting.co.nz](mailto:brigid@nextchapterparenting.co.nz)