



BEACONSFIELD SCHOOL

A Beacon Lighting the Path of Excellence and Wellbeing

Beaconsfield Calendar

31st July Term 3 Week 3

Principal's Newsletter – Term 3, Week 3

Hi everyone,

We have got an exciting and busy few weeks ahead here at school and we want to keep you in the loop with what's coming up and how you can be involved.

First off, our much-anticipated **Ski, Skate and School Day** is on the horizon! This is always a highlight for many students and parents to try new things and enjoy the winter season with friends. It is also a great way for our students to build confidence, resilience and have some fun in the snow and on the ice. Please remember parents are to organise transport and are expected to supervise their children on the day. Thank you to Mrs Cooper for pulling it all together.

School Board Elections are also approaching. Being on the board is a way for parents and whānau to be involved in our school. If you are curious or interested in standing, we encourage you to ask questions to find out more. If you have questions please make contact with a Board member or myself.

Our senior students attended the **Aoraki Maths Competition** on Tuesday evening. They did us proud with the effort they put into this challenge. It is a great opportunity for them to push their thinking, work as a team, and represent our school.

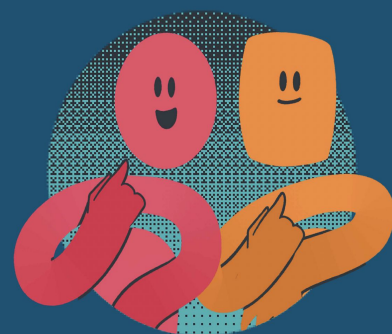
At the same time, we have been working behind the scenes on a few key human skill focuses. One is **building resilience in children**—helping them manage challenges, bounce back from setbacks, understand the word “No” and grow into confident, capable learners.

We are also developing new information for families to support **maths learning at home**, especially with the changes in the curriculum. The aim is to make maths have a strong connection between home and school and ensure maths is achievable, relevant, and enjoyable for all.

As always, thank you for your ongoing support. It is amazing to have you as part of our school community.

Electronic messaging is what we are working with as all schools and “life” increasingly sends and receives information digitally. With our HERO App if you get a notification you need to go into the App to get the full message. If you are having any problems with this please catch up with Lisa in the office.

See you around school
Hamish



Get on board!

Nominate yourself or someone you know
to be a school board member.



**Coming
August 20th
and
August 21st**

**STAR
THE UMPIRE STRIKES BACK
WARTS**

**MAY THE SAUCE
BE WITH YOU!**



Pie Warmer Term 3

Reminder that the pie warmer is available on Tuesdays & Thursdays. Please ensure items are defrosted and clearly labelled with your child's name and class. No soups or noodles please,



BEACONSFIELD SCHOOL

A Beacon Lighting the Path of Excellence and Wellbeing



Excellence



Respect



Initiative



Creativity



Perseverance



Well done to the following students for demonstrating the Beaconsfield School Values - Top picture: Lucas, Ryan, Lucy, Charli & Mila (back row) and Beau, Parker, Parker and Jack. Below picture: Caitlyn, Toby, Archie, Neve, Parker & Heath (back row) and Gus, Zechariah, Macie and Foxton.



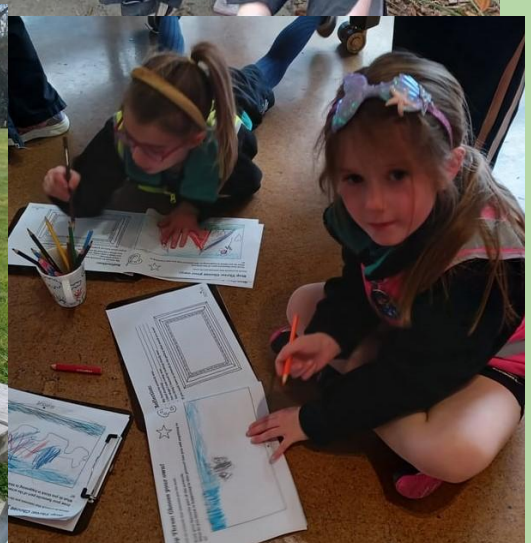


BEACONSFIELD SCHOOL

A Beacon Lighting the Path of Excellence and Wellbeing



Room 2 enjoyed a Big Day Out at the Library, Art Gallery & CBay on Tuesday. A HUGE thank you to our parent helpers!





BEACONSFIELD SCHOOL

A Beacon Lighting the Path of Excellence and Wellbeing

**SUBWAY**

SUBWAY - FRIDAYS

\$7 -six inch, cookie, apple.

\$11 - footlong combo

If you are able to drop the Subway in to Redruth branch on Friday mornings please contact Lisa at the office.

ROOM 5 CAMP FUNDRAISER

Every Wednesday until the end of the term. Order at the office.

American Hot Dogs **\$3.00**



SCHOOL
HONEY FOR
SALE - \$8
Cash or pay
online, pick up
at the office.





BEACONSFIELD SCHOOL

A Beacon Lighting the Path of Excellence and Wellbeing

Community Notices



mrs A's
music school

BUS BAND

- We have all the equipment and instruments on board. You get to experience Keyboards, Ukelele, Guitar, Bass, Drums and Singing. You can try a few instruments before you settle on one.
- It's in school time, Primary school students pop out of class for 30 minutes per week and for the first few terms in a group minimum 3 maximum 6.
- As students become more competent it will be time to advance to one to one lessons at the studio after school.



Igniting musical passion and fun

GROUP LESSONS
INSTRUMENTS PROVIDED
VARIETY OF GENRES



PRE ENROL AT

www.mrsasmusicschool.co.nz/enrol



Ed 0272011940

George 0276129988

Small Bale - \$6 from paddock - \$7 from shed - \$8 delivered

Big Bale - \$55 from shed - \$65 delivered

Pea straw for Sale



Find us on FaceBook @
Maungati Straw

PIC-COLLAGE

SCAAC JUNIOR JUMPSTART PROGRAMME



SOUTH CANTERBURY AMATEUR ATHLETICS CLUB

Fun - fitness - fundamentals An Introduction to Athletics

For Ages 4-10

Join us for an exciting journey into athletics!

From running and jumping to throwing and teamwork, your little athlete will get to explore the joy of movement in a safe, inclusive, and high-energy environment.

Venue: Martin Field, Timaru, Time: 4pm till 5pm, Every Wednesday

Limited to 100 **\$50** Club Donation

- ✓ 6 WEEK PROGRAMME
- ✓ LEARN BASIC FUNDAMENTALS OF ATHLETICS (RUN/JUMP/THROW)
- ✓ DEVELOP COORDINATION AND CONFIDENCE
- ✓ MEET NEW FRIENDS
- ✓ LED BY EXPERIENCED, FRIENDLY COACHES!
- ✓ NO EXPERIENCE NEEDED
- ✓ ALL YOU NEED TO BRING IS YOUR WATER BOTTLE

Starting August 6th

Ursula Moray Williams Creative Writing Competition 2025

Open to local children aged between
5 and 18 years.

Entry forms and guidelines
are available at Timaru District Libraries
or may be downloaded from our website
www.timarudistrictlibraries.co.nz

Entries close at 6pm,
Friday 15th August, 2025.





BEACONSFIELD SCHOOL

A Beacon Lighting the Path of Excellence and Wellbeing

Community Notices

Calling all Student Photographers

Enter our Photography Competition At The Geraldine Festival



Photo Topics: Wildlife - The Colour Green - Food

Great Prize Money: 1st Place \$50 - 2nd Place \$30 - 3rd Place \$10

Entry Forms From: Your School or www.geraldinefestival.co.nz

SOUTH CANTERBURY
Drama League

MUSICAL THEATRE

PRODUCTION OF

HELLO, DOLLY!



DIRECTOR:
TJ Ramsay

MUSICAL DIRECTOR:
Ella Thomas

CHOREOGRAPHER:
Bronwyn Chittock

Book by
Michael Stewart

Music and Lyrics by
Jerry Herman

Based on the play "The Matchmaker" by Thornton Wilder

"Hello, Dolly!" is presented by permission of ORIGIN TM Theatrical
on behalf of Tams-Witmark LLC, A Concord Theatricals Company

Book at **iTICKET**

On Stage

24 July - 9 August
Playhouse - Timaru 2025